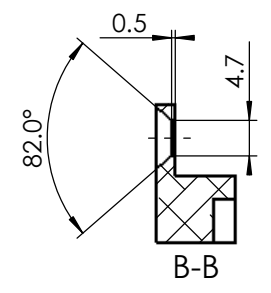
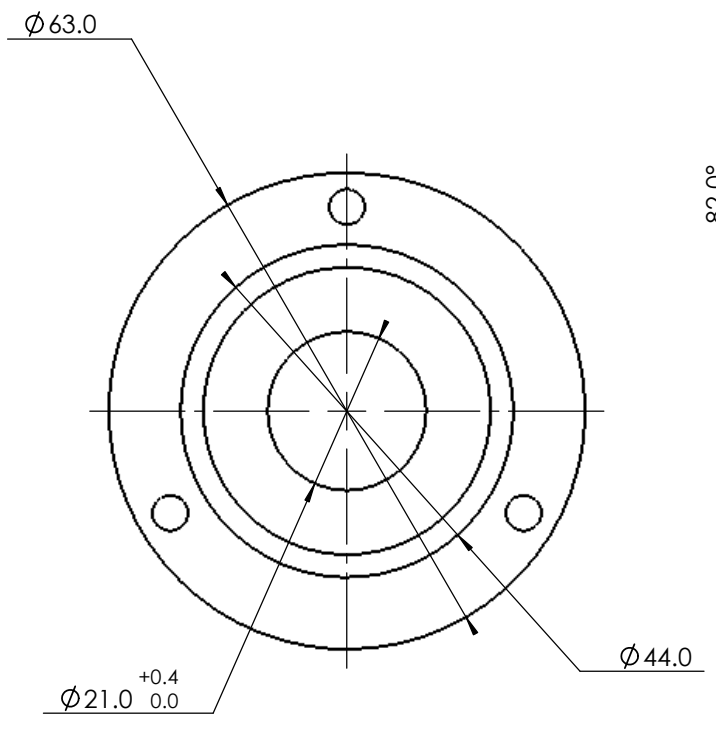
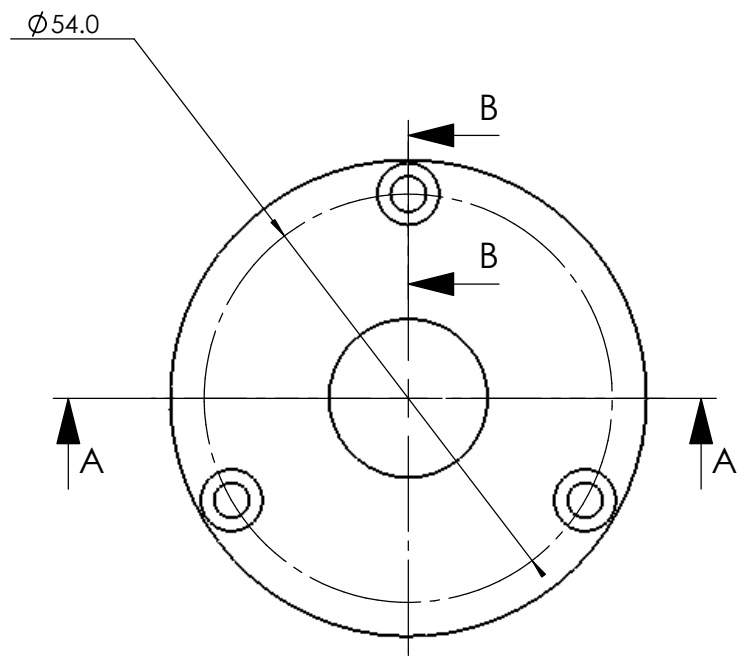
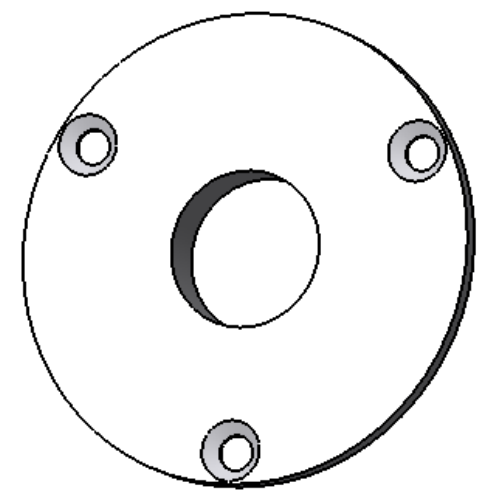
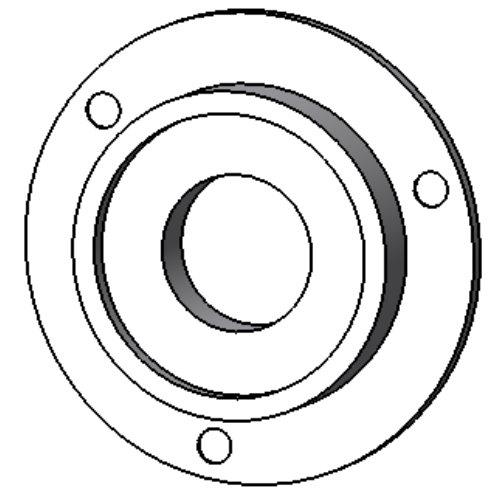
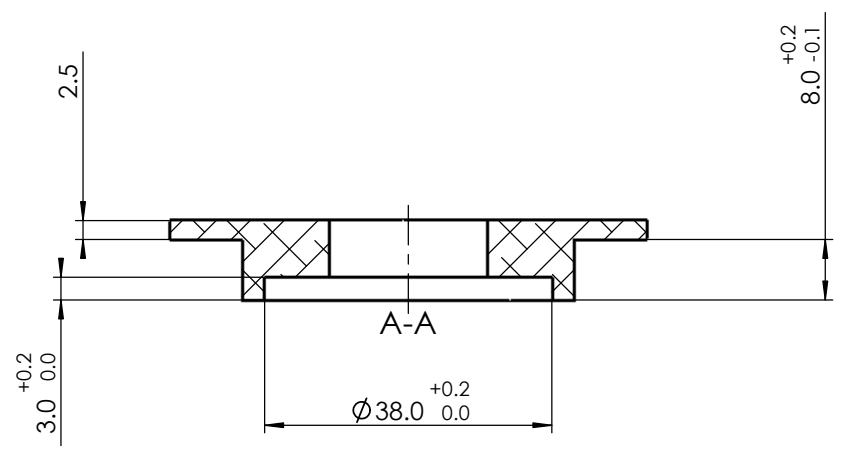


REV	ECO No	DESCRIPTION	DRAWN	APPROVED	DATE
-	-	-	-	-	-
-	-	-	-	-	-



TYP. 3 PL. EQ. SP.



3	-	-
2	-	-
1	-	-

MATERIAL: AL. AL 6061-T6 PER QQ-A-250/11F OR PER QQ-A-225/8E

MATERIAL: AL. AL 6061-T6	UNLESS OTHERWISE SPECIFIED: MACHINING REQUIREMENTS BREAK SHARP CORNERS AND EDGES 0.2 MAX FILLET RADIUS 0.4 MAX C SINK INT. THREADS 90° TO MAJOR DIA CHAMFER EXT. THREADS 45° TO MAJOR DIA	
FINISH: 1		
SURFACE ROUGH. NZ / (▽ / ▽ / ▽)	GENERAL TOLERANCES: 0 - 30 ±0.2 ANGLES ±0.5° 30 - 500 ±0.3 HOLES 0 - 10 +0.2 / -0.05 500 - 1000 ±0.5 HOLES 10+ GEN. TOL 1000 + ±1 BETWEEN HOLES ±0.05	

DESIGNED	--	--/--/----	UNLESS OTHERWISE SPECIFIED: ALL DIMENSIONS IN MM & INCLUDE CHEM. APPLIED/PLATED FINISH. DO NOT SCALE DRAWING.	TITLE: MAGNETO TIMING OIL SEAL FLANGE	DWG No. 65-2136 HOUSE	REV 0	
DRAWN	--	--/--/----					
CHECKED		--/--/----					
APPROVED		--/--/----					
			PROJECT		SCALE 1:1	SHEET 1 OF 1	SIZE A3